

A LIGHTING BASKET



moriko kira architect x Machi Machi architects

VARIETY



SOFTNESS



FLEXIBILITY

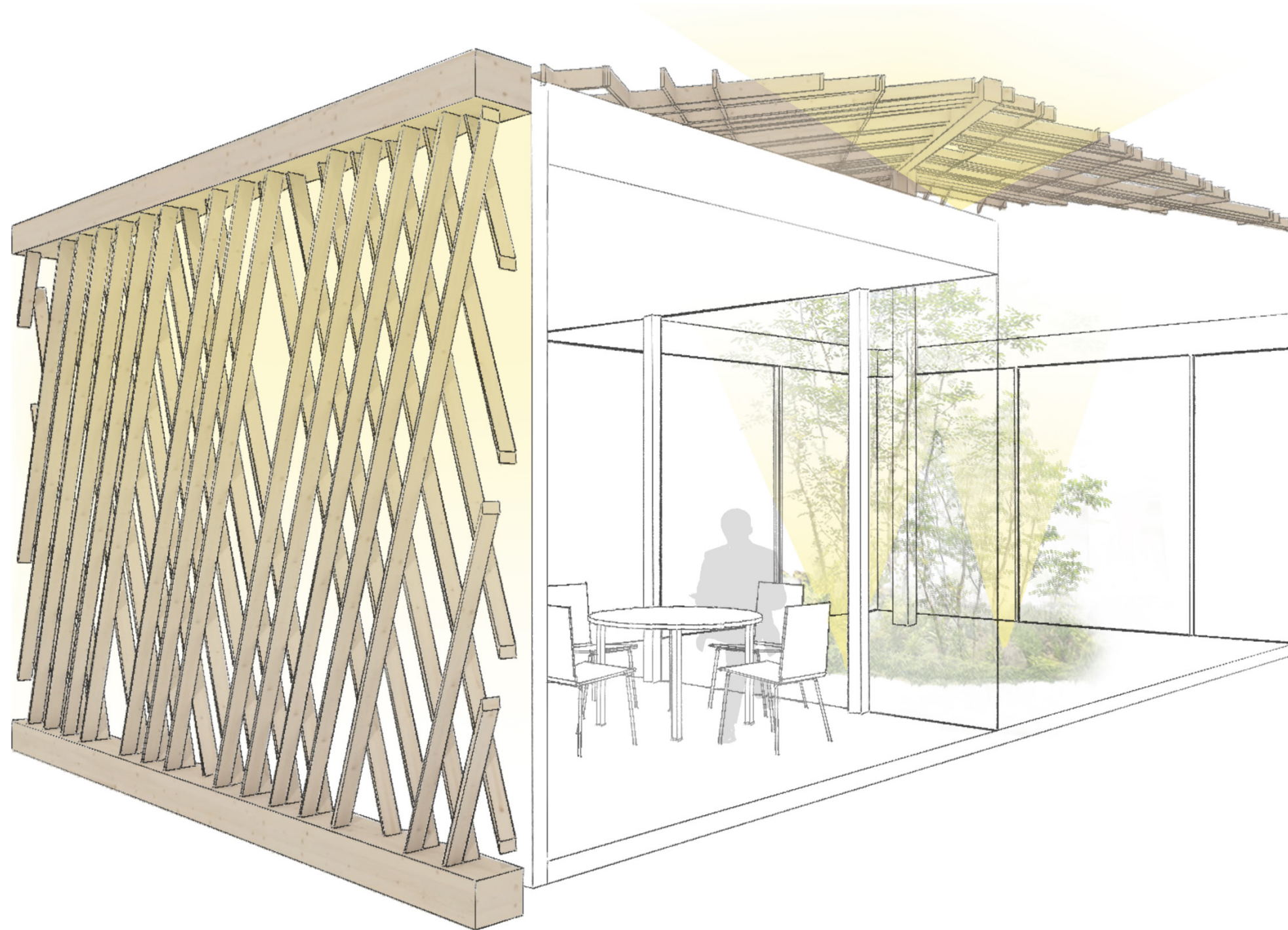


A LIGHTING BASKET



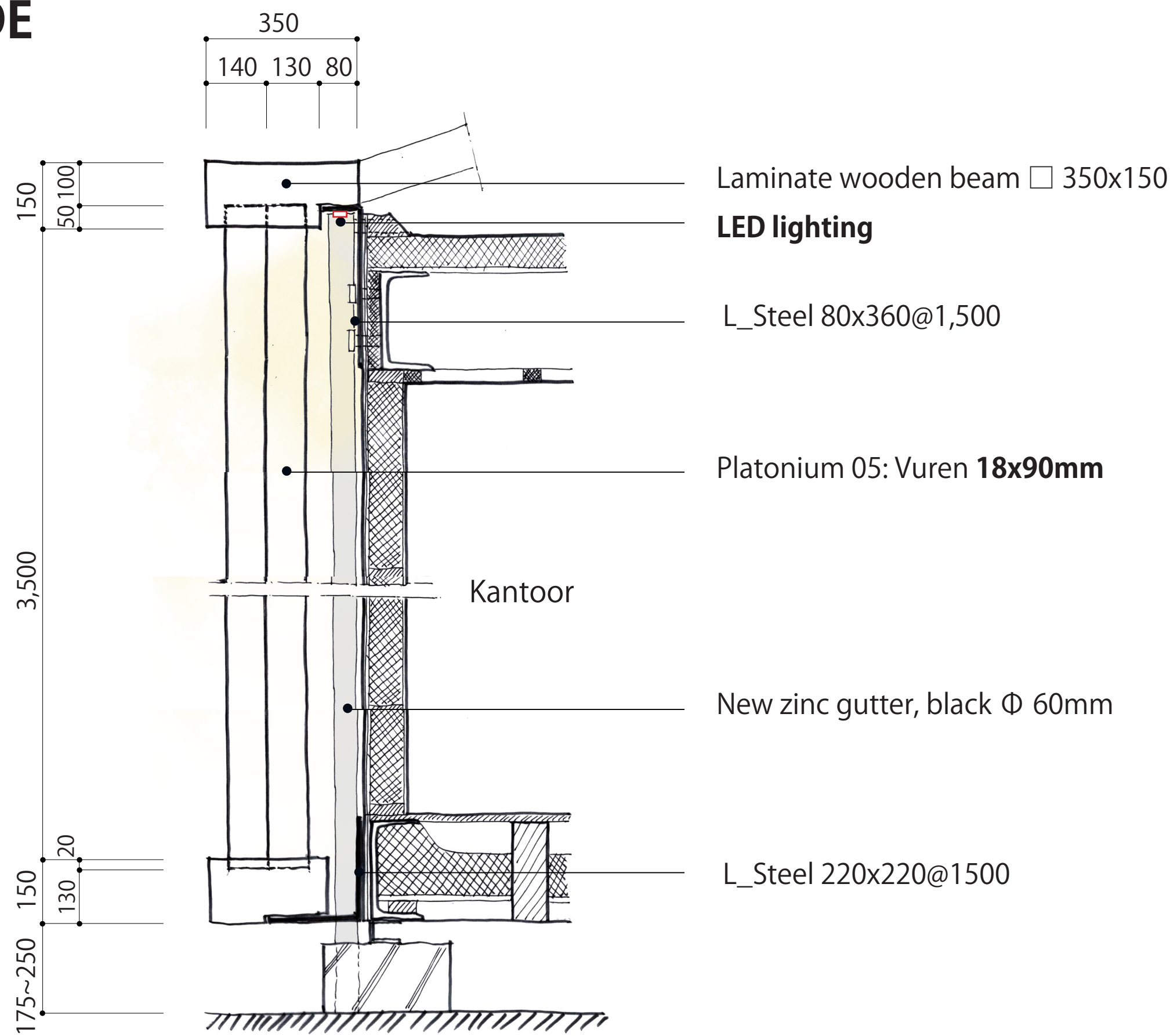
VARIETY, SOFTNESS, FLEXIBILITY

DEEP FACADE



This pavilion is gently wrapped in sustainable wooden panels and lights

DEEP FACADE









PLATOWOOD

KIGUMI

NO SCREWS, NO METAL JOINTS, NO GLUE



extension

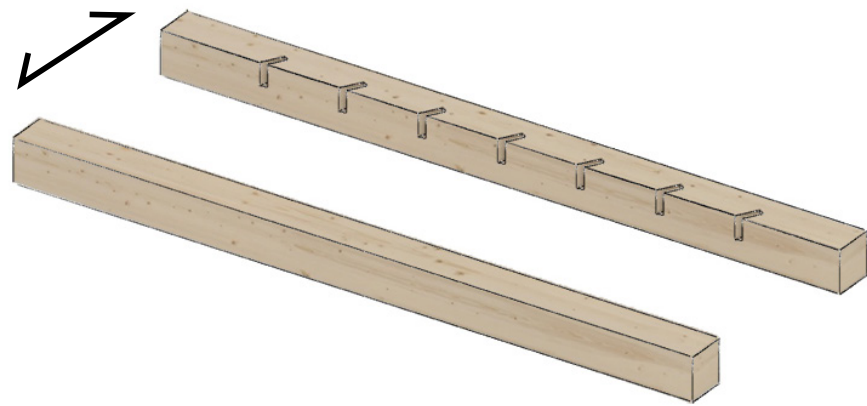


corner

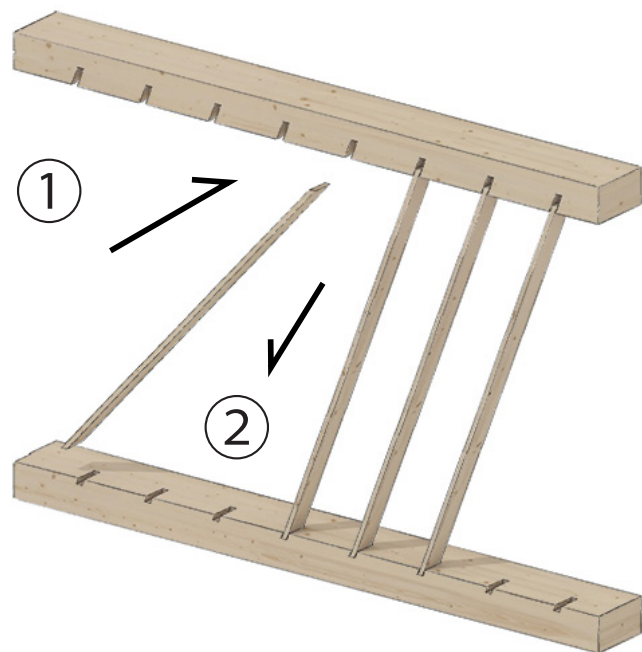


connection

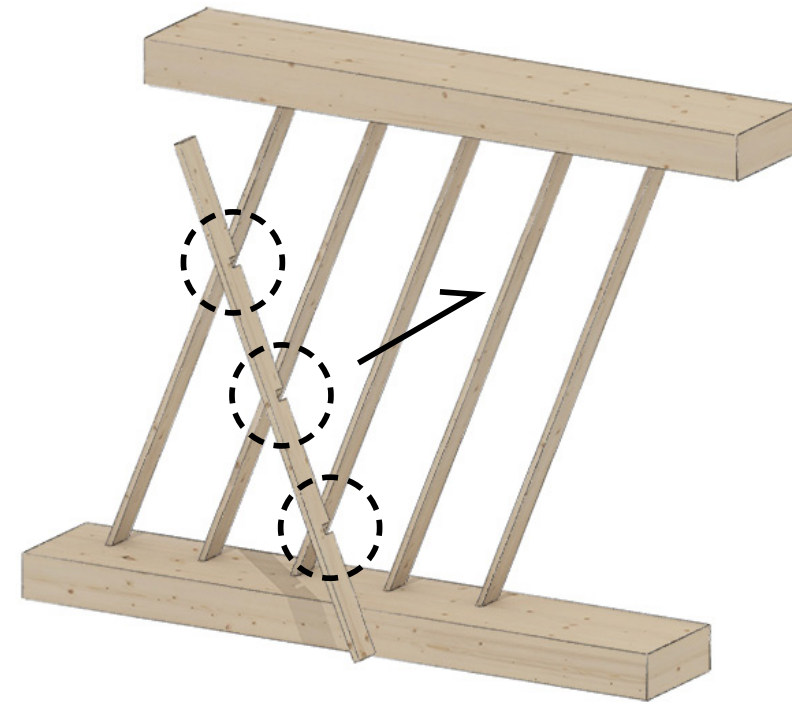
How to install_A



1) Make holes with a laser cutter and laminated it



2) Installing panels to push it up and pull it down

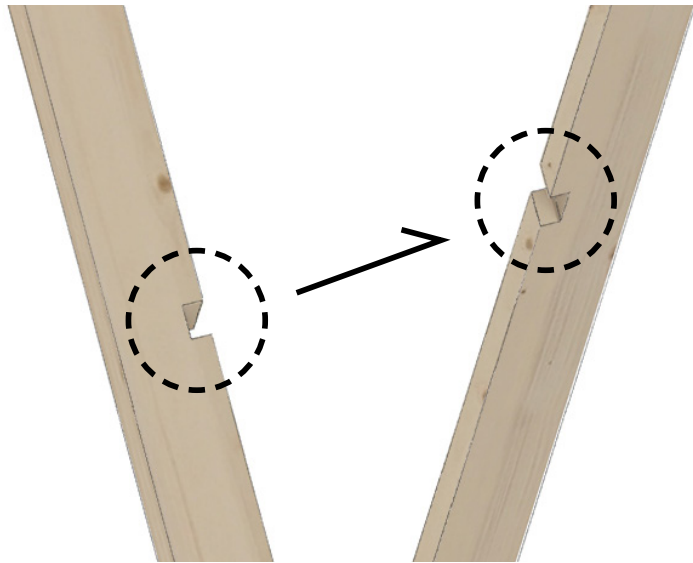


3) Install panels lacking small pieces in parallel

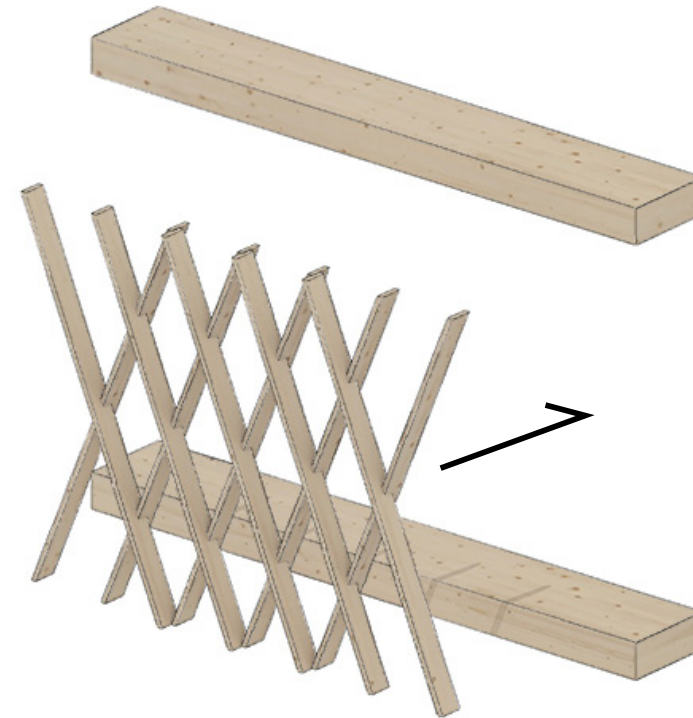


4) Stop panels with a small wood or finish nails

How to install_ B



1) Shave the wood on both sides at the factory



3) Move panels in parallel and install it at the site



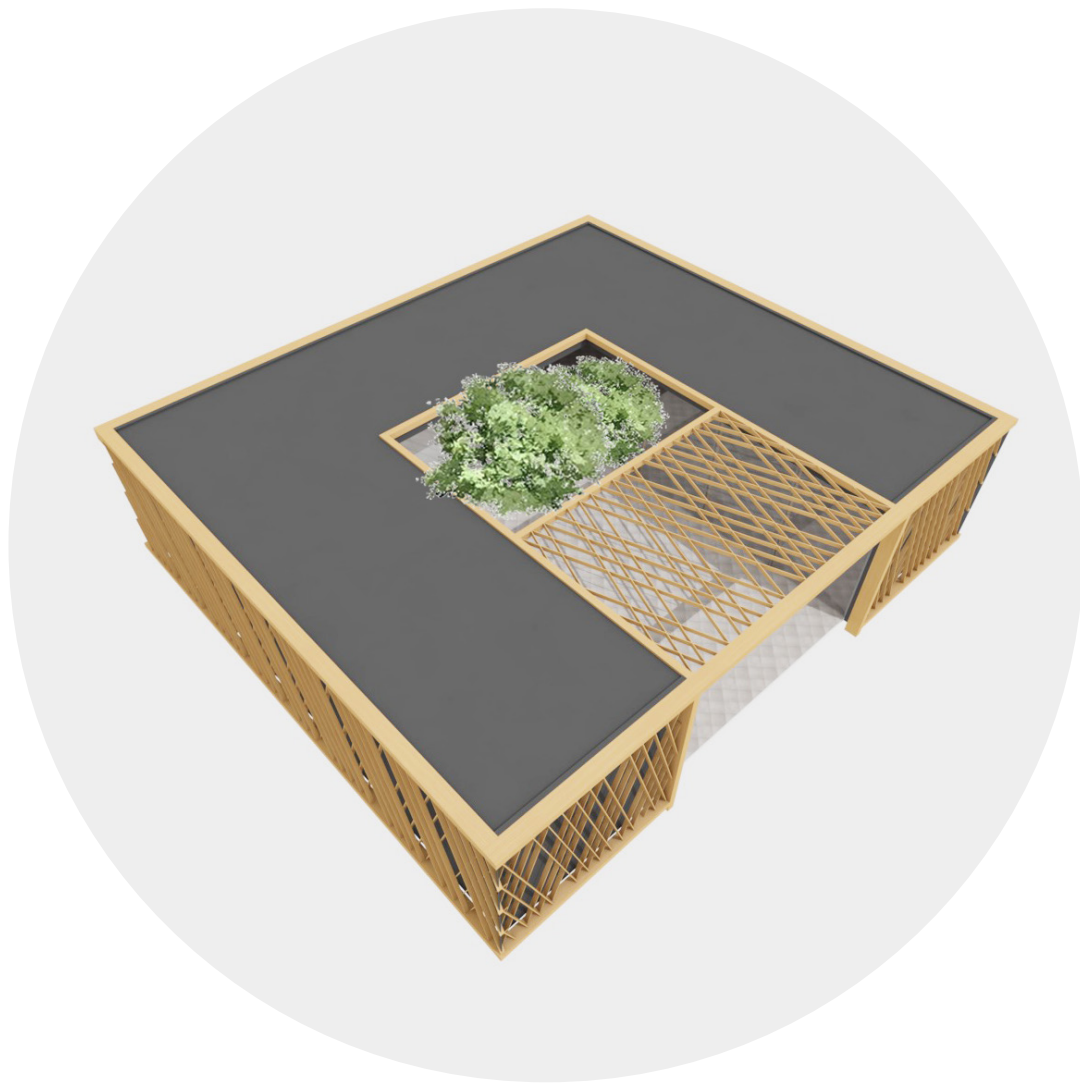
2) Panelized at the factory with a certain size



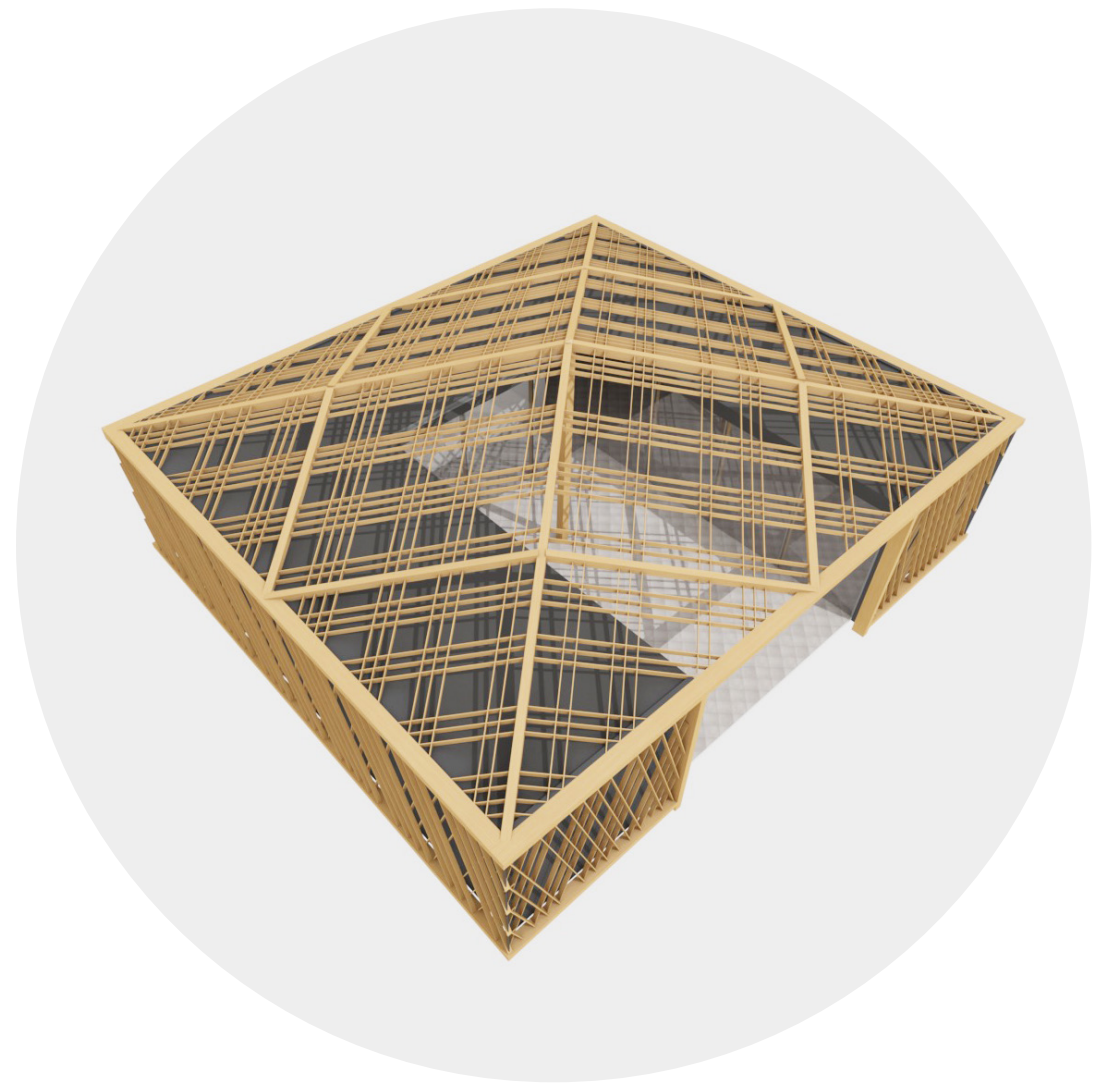
4) Stop panels with a small wood or finish nails

ROOF

Platowood entrance gate or one big pavilion



Entrance gate



One pavilion





